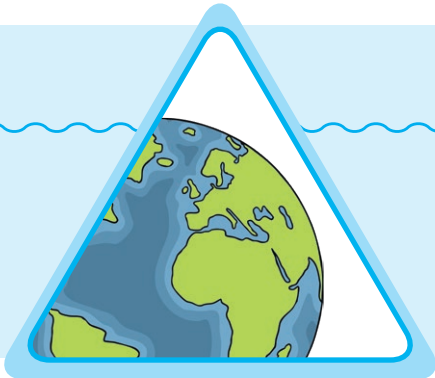


Winter

Winter is one of the four seasons of the year.
The other seasons are autumn, spring and summer.



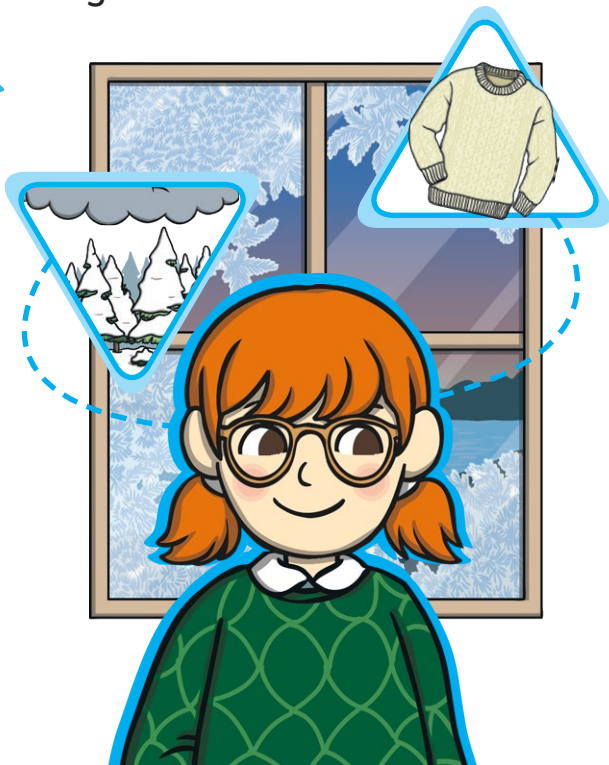
Did You Know...?

- Winter is December, January and February in the UK.
- Winter is June, July and August in Australia.

Weather in Winter

It is cold in winter. Sometimes it rains but sometimes it snows.

When it snows, you can make a snowman or go sledging down a big hill.



Nature in Winter

Leaves fall from trees and many animals go to sleep through the winter. These are some animals that hibernate:

• hedgehogs



• frogs

• queen bees



Some birds fly away to warmer countries in the winter.



Questions

1. How many seasons are in one year? Tick one.

- ☐ three
- ☐ four
- ☐ five

2. What is the weather like in winter? Tick one.

- ☐ It is cold.
- ☐ It is warm.
- ☐ It is sunny.

3. Which animals hibernate? Tick one.

- ☐ dogs
- ☐ frogs
- ☐ trees

4. Some animals do not hibernate. What do they do? Tick one.

- ☐ Some birds fly away to colder countries.
- ☐ Some frogs fly away to warmer countries.
- ☐ Some birds fly away to warmer countries.

5. Which months are winter in Australia? Tick **two**.

- ☐ December
- ☐ June
- ☐ August

Answers

1. How many seasons are in one year? Tick one.

- ☐ three
- ☒ **four**
- ☐ five

2. What is the weather like in winter? Tick one.

- ☒ **It is cold.**
- ☐ It is warm.
- ☐ It is sunny.

3. Which animals hibernate? Tick one.

- ☐ dogs
- ☒ **frogs**
- ☐ trees

4. Some animals do not hibernate. What do they do? Tick one.

- ☐ Some birds fly away to colder countries.
- ☐ Some frogs fly away to warmer countries.
- ☒ **Some birds fly away to warmer countries.**

5. Which months are winter in Australia? Tick **two**.

- ☐ December
- ☒ **June**
- ☒ **August**



Winter

Many countries across the world have four seasons called spring, summer, autumn and winter. Winter is the coldest season of the year.



Weather in Winter

Both night and day can be very cold. There might be snow or ice if the temperature drops below freezing. Travelling can be more difficult in winter.



Did You Know...?

Some countries around the world do not have a winter. Countries which are close to the equator may have a rainy season and a dry season but no winter. India is close to the equator.



Nature in Winter

Many trees drop their leaves in winter. Some plants are evergreen, which means they keep their leaves. Holly has glossy leaves and pretty berries during the winter.

Some animals survive the cold winter months by hibernating.

This means that they find somewhere safe to rest through the bad weather. These animals wake up and begin to find food when spring arrives. Animals which hibernate include:

- hedgehogs
- frogs and toads
- queen bees

There are other animals which move to warmer countries during the winter. This is called migrating. Some birds fly south for the winter. Swifts fly great distances from the UK to reach Africa.



Amazing Animals

The monarch butterfly of North America migrates more than 3,000km or 1,800 miles in winter.

Earthworms migrate a very small distance during the winter. They dig about two metres down into the soil!

Questions

1. Which season is the coldest of the year? Tick one.

- ☐ spring
☐ autumn
☐ winter

2. What happens if the temperature drops below freezing? Tick one.

- ☐ There might be puddles.
☐ There might be snow or ice.
☐ There might be four seasons.

3. Draw **two** lines and match each animal to how far they migrate.

monarch butterfly •

earthworm •

• migrates a long distance

• migrates a short distance

4. Look at the **Nature in Winter** section.

Find and **copy** a word which describes the plants that keep their leaves in winter.

5. Where do swifts go to when they migrate?

Answers

1. Which season is the coldest of the year? Tick one.

- ☐ spring
- ☐ autumn
- ☒ **winter**

2. What happens if the temperature drops below freezing? Tick one.

- ☐ There might be puddles.
- ☒ **There might be snow or ice.**
- ☐ There might be four seasons.

3. Draw **two** lines and match each animal to how far they migrate.



4. Look at the **Nature in Winter** section.

Find and **copy** a word which describes the plants that keep their leaves in winter.
evergreen

5. Where do swifts go to when they migrate?

Accept any of the following: Swifts go to Africa when they migrate; Swifts fly south for the winter when they migrate; Swifts fly to a warmer country when they migrate.



Winter

Across the world, many temperate countries experience four different seasons. These are **spring**, **summer**, **autumn** and **winter**.

Of them all, winter is the coldest.



Weather in Winter

During the winter, the sun sets early in the afternoon and rises late in the morning.

Thus, the nights are long and the days are short. Both night and day can be very cold, with freezing temperatures that result in ice, hail or snow.

Travelling can be more difficult in winter but building a snowman can be very fun!

Nature in Winter



In winter, many trees drop their leaves. Oak trees and beech trees drop their leaves and are left bare. However, evergreen plants keep their leaves all year round.

Holly and ivy are two plants that often look their best during the winter.

Animals survive the winter in different ways, such as hibernating or migrating. Hibernating animals rest during the winter. When the milder weather of spring arrives, these animals wake up from their slumber and begin the search to find food.



Did You Know...?

Many countries around the world do not experience a winter.

Tropical countries, lying close to the equator have a very different climate.

They might have a rainy season and a dry season but no winter. It is usually warm every day in these countries.

India and Thailand are close to the equator.



Animals which hibernate include:

• queen bees



• tortoises

• hedgehogs



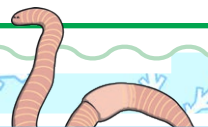
• frogs



In contrast, migrating animals move to warmer countries in order to survive and some birds fly great distances. Swifts live in the UK in the summer and they fly over France and Spain in order to reach Africa. In addition, some mammals and insects migrate.

Amazing Animals

- The monarch butterfly of North America migrates south to Mexico. Some travel more than 3,000km or 1,800 miles to reach their destination.
- The humble earthworm migrates a much smaller distance: about two metres into the soil!



Questions

1. What are spring, summer, autumn and winter? Tick one.

- ☐ four different seasons
- ☐ four cold seasons
- ☐ four types of weather

2. Look at the **Amazing Animals** section.

How far do monarch butterflies migrate? Tick one.

- ☐ Some migrate south to Mexico.
- ☐ Some migrate about two metres into the soil.
- ☐ Some migrate more than 3,000km.

3. Fill in the missing words.

During the winter, the sun sets _____ in the afternoon.

4. Find and copy the names of two plants which often look their best in winter.

1. _____

2. _____

5. What makes animals wake up after hibernation?

6. Would you prefer to live in a tropical country or a temperate country (one with four seasons)? Explain your answer with reasons from the text.

- ☐ Tropical country
- ☐ Temperate country with four seasons

Answers

1. What are spring, summer, autumn and winter? Tick one.

- ☒ **four different seasons**
- ☐ four cold seasons
- ☐ four types of weather

2. Look at the **Amazing Animals** section.

How far do monarch butterflies migrate? Tick one.

- ☐ Some migrate south to Mexico.
- ☐ Some migrate about two metres into the soil.
- ☒ **Some migrate more than 3,000km.**

3. Fill in the missing words.

During the winter, the sun sets **early** in the afternoon.

4. Find and copy the names of two plants which often look their best in winter.

1. **holly**

2. **ivy**

5. What makes animals wake up after hibernation?

When the milder weather of spring arrives, animals wake up after hibernation.

6. Would you prefer to live in a tropical country or a temperate country (one with four seasons)? Explain your answer with reasons from the text.

- ☐ Tropical country
- ☐ Temperate country with four seasons

Pupils' own responses, such as: I would prefer to live in a tropical country because I don't like winter and I would like to have warm weather all through the year. I would prefer to live in a temperate country because I like all the different seasons and building a snowman in winter is my favourite.