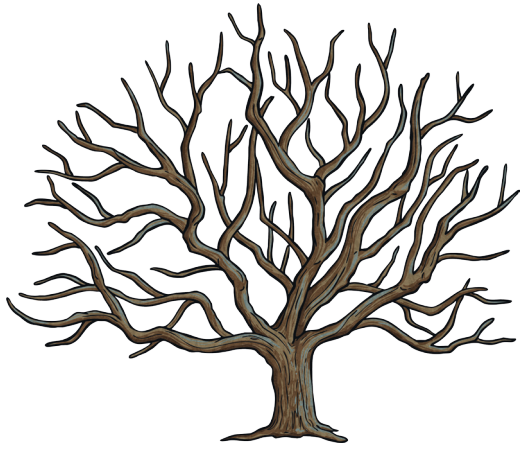


Guide to Drawing a Winter Tree

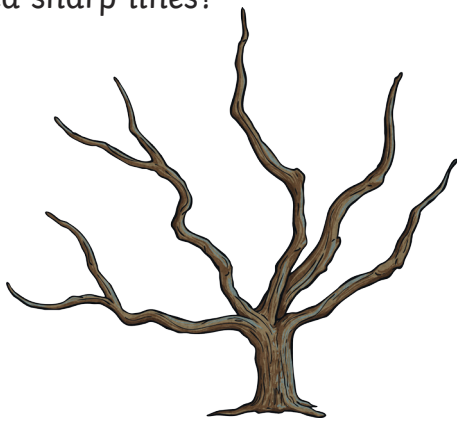
Step by step guide: how to draw a winter tree.



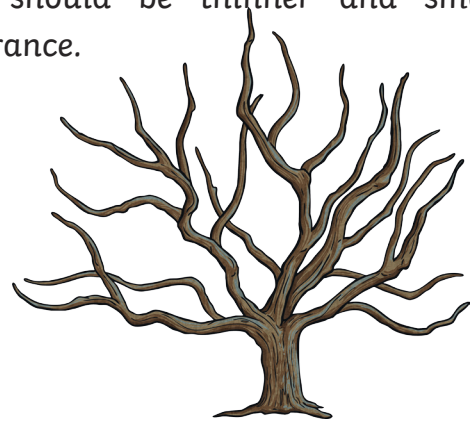
1. Begin with the trunk. Think: is it long? Thick? Does it tilt to one side? The outline should be thick and heavy.



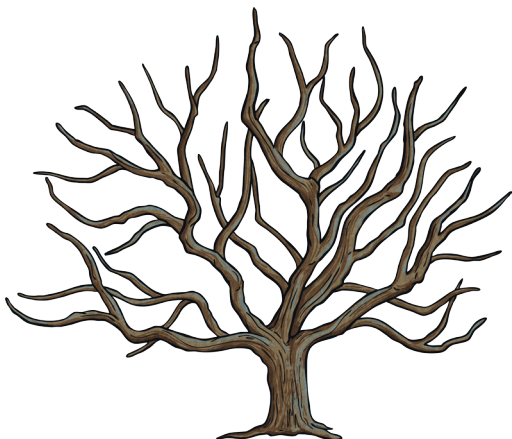
2. Next, draw 5 main branches. These should not be as thick as the trunk but the line should be heavy. Are your branches curved? Or do you need sharp lines?



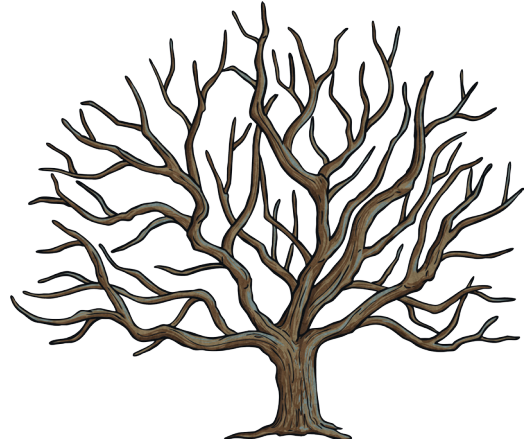
3. Now it's time to add supporting branches. These are branches we can't see join the trunk because they are behind our main branches. These should be thinner and smaller in appearance.



4. Now, add in smaller branches coming away from your main and supporting branches. These lines will be thinner and sharper.



5. Finally, add some twigs to your branches. These should be made up of short, thin, sharp lines. Think carefully about the directions.



Drawing a Winter Tree - Pupil Sheet

Follow each step carefully to draw your very own winter tree!

