

St Mary's Catholic Primary School



**Plan for Return to School
from 8th March 2021**

Introduction

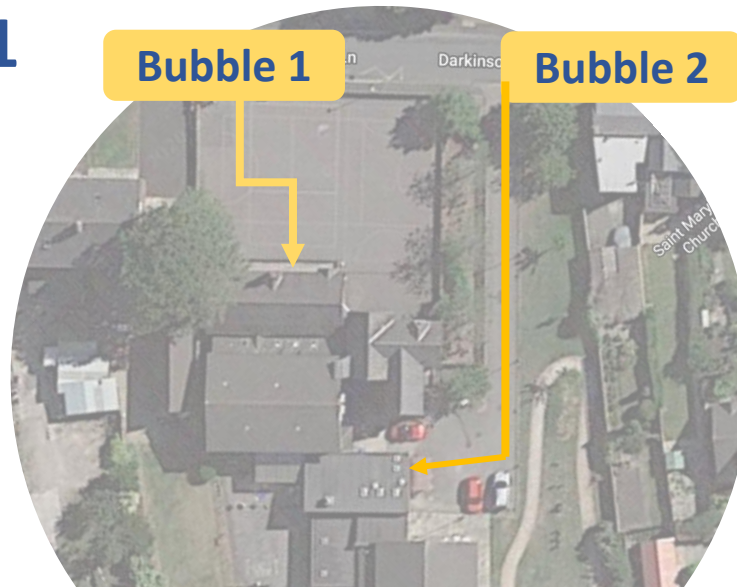
- The UK Government (HMG) have instructed that all children will return to school from Monday 8th March 2021. This will be mandatory.
- As you would expect a number of measures will once again be in place for the safety and wellbeing of all at St. Mary's school
- All guidance is carefully considered to meet the needs of St. Mary's school
- All arrangements are underpinned by a detailed Health and Safety risk assessment
- Any questions are to be directed to a member of staff or the Head Teacher
- The purpose of this pack is to serve as a refresher and highlight any new or additional information.

Key Points

- School enhanced cleaning regimes will remain in place and children to wash their hands regularly as per HMG advice .Pupils are encouraged to bring their own hand gel
- The school will continue to operate in ‘Bubbles’ – each class will be a bubble:
 - Bubble 1 = Class 1 – Reception and Year 1
 - Bubble 2 = Class 2 – Year 1 and Year 2
 - Bubble 3 = Class 3 – Year 3 and Year 4
 - Bubble 4 = Class 4 = Year 5 and Year 6
- Staff and pupils will endeavour to maintain Social distancing apart but recognising this is not always possible, other changes will be made to minimise risk, e.g. *Desks facing forward, staggered start/ finish times*
- Bubbles are not permitted to interact or cross over:
 - Pupils and Staff will remain in their respective bubbles throughout the school day
 - Timings for the school day will change slightly to ensure that bubbles are not all arriving at the same time

Routes In – KS1

- ARRIVE – 09:00
- Enter via front gate
- Enter Class 1 via front slope
- Wash hands in KS1 toilets
- LEAVE – 15:15



- ARRIVE – 09:00
- Enter via rear entrance
- Wash hands in KS2 toilets
- Go to Class 2 via corridor
- LEAVE – 15:15

In the morning Pupils will be greeted by staff members as parents/ carers cannot enter the school grounds. parents/ carers must drop pupils at the gate, pupils will line up on the coloured spots. Adults **MUST NOT** gather / wait to wave etc. at the school gates

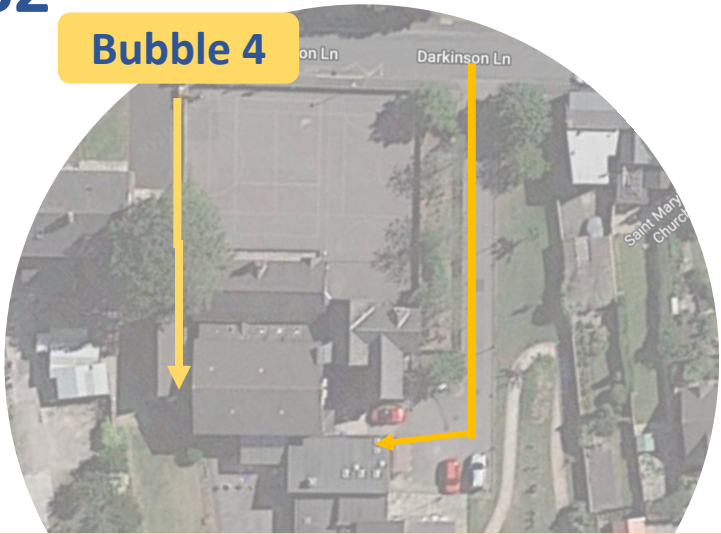
At the end of the school day adults are asked to wait on a coloured spot to collect pupils. Face coverings **MUST BE WORN** by all adults whilst on the school grounds. We ask that only **ONE** adult collects. Additional adults/ secondary aged siblings are asked not to enter the school grounds.

Start and finish times MUST be adhered to strictly to ensure safety

Routes In – KS2

Bubble 3

Bubble 4



- ARRIVE – 08:45
- Enter via front gate
- Enter Class 4 via fire staircase
- Wash hands in class room
- LEAVE – 15:00

- ARRIVE – 08:45
- Enter via rear entrance
- Wash hands in KS2 cloaks
- Go to Class 3 via main stairs
- LEAVE – 15:00

In the morning Pupils will be greeted by staff members as parents/ carers cannot enter the school grounds. Parents/ carers must drop pupils at the gate, pupils will line up on the coloured spots. Adults **MUST NOT** gather / wait to wave etc. at the school gates

At the end of the school day adults are asked to wait on a coloured spot to collect pupils. Face coverings **MUST BE WORN** by all adults whilst on the school grounds. We ask that only **ONE** adult collects. Additional adults/ secondary aged siblings are asked not to enter the school grounds.

Start and finish times MUST be adhered to strictly to ensure safety

Breaks and Lunch times

- Pupils will have break times and lunchtimes within their Bubble.
- Lunches will be eaten in classes. A hot meal is available and menus will be displayed online.
- Pupils must limit what is brought into school to only essential items; A hat, coat,, hand gel, water bottle and packed lunch only.
- All stationery items will be provided in school.

Before School, After School Club and Extra Curricular clubs.

- To ensure to the safety and well being of our pupils and staff and ensure pupils do not ' Cross Bubbles' we will not be able to offer our Breakfast or After School clubs
- We will look to resume ' Bubble' sports clubs from W/C 15.3.21 with every class having access to at least one additional club after school

Frequently Asked Questions

- Will the school bus be running ?
 - The bus will resume from 8.3.21.As this service is external to school we cannot prevent pupils from crossing Bubbles. It is our expectation that pupils using this service will wear a face covering/mask. Pupils must be shown how to safely remove and dispose of a mask upon arrival. We thank you for supporting us with this matter.
- My Child's Bubble closes at 3.00 can they still get the bus ?
 - Yes, they will be directed to a safe area to wait for the bus to arrive. In the same way if they arrive before their Bubble opens they will be shown to a designated waiting area.

Frequently Asked Questions

- My children are in two different Bubbles can they just arrive together and come in the same way?
 - No. Whilst we appreciate this is challenging, such plans are in place to ensure everyone's safety and that we are following guidance. It may be necessary that one child waits in the car etc. with you until the next Bubble opens.
- Will Celebration Assembly take place ?
 - No. Unfortunately assemblies or large gatherings which would require adults and pupils to cross bubbles or gather in a large group will not be possible. We will continue to hold our internal celebrations via Zoom.

Frequently Asked Questions

- I need to pay in dinner money, Can I come into the office ?
 - No. We would ask that money is put in a sealed, clearly labelled envelope and given to the Teacher who will ensure it reaches the office.
- I have medication for child, can I bring this in?
 - Yes. Pupils are not permitted to carry medication so we would ask you to bring this to the office. Please buzz the intercom and once inside you must adhere to the designated social distancing markers. No more than 2 adults are permitted in the entrance Foyer at any time. As per medication policy we can only accept medication, in original packaging that has been prescribed. We are only able to accept medications that require administration 4 times per day.

Frequently Asked Questions

- Will I receive a newsletter?
- Newsletters will be available on our School Website.
- How can I communicate information to my child's class teacher?
- If you have important, urgent information you need to share please contact the office by telephone. Any other information you wish to share can be communicated by email to your child's teacher.
- Will work still be on Google Classrooms ?
- As pupils will be taught in classes work will not be uploaded to Google classrooms from 8.3.21. Should a Bubble closure be necessary the staff will use this platform once more so please keep your child's log in details safe.

Frequently Asked Questions

- Does my child need to complete Lateral flow tests?
- No. At present this is only advised for staff and secondary aged pupils
- Does my child need to wear a Face covering ?
- Primary aged pupils are not required to wear a face covering on or in the school grounds. Adults are required to wear a face covering (unless Medically exempt)
- Does my child have to return to school, I am nervous?
- The Government have made attendance at school Mandatory from 8.3.21. If you have any worries or concerns, as ever, please get in touch and we will do our best to support you and answer any questions.

Thank you

- Thank you for taking the time to read this presentation and we hope that this has helped clearly explain everything to you.
- We wish to continue to work in partnership with you and ensure everyone's safety and well being.
- As ever, if we can help please contact us.